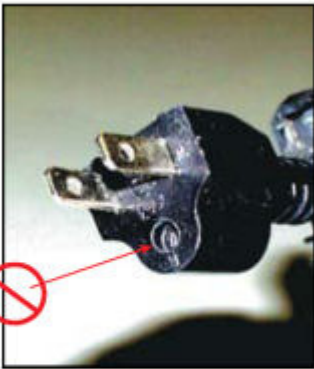




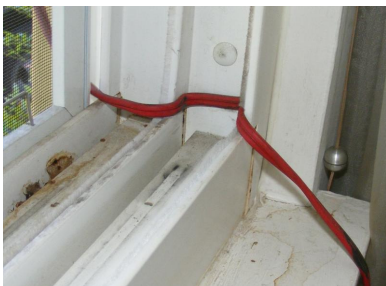
ARCO SAFE TOOL BOX TALKS

Electrical – Extension Cords

1926 Subpart K, Electrical



Never use a three-prong grounding plug with the ground prong broken off.



Extension cords are a necessary piece of equipment on today's construction sites. However, they are the most damaged piece of equipment on job sites. It is easy for them to become ripped, torn, or spliced. They must be checked thoroughly every day to prevent shock (injury), or electrocution (death).

- Extension cords connected to equipment may not be used for raising or lowering the equipment.
- Extension cords may NOT be fastened with staples or otherwise hung in such a fashion as could damage the outer jacket or insulation.
- Extension cords shall be visually inspected before use on any shift for external defects (such as loose parts, deformed and missing pins, or damage to outer jacket or insulation) and for evidence of possible internal damage (such as pinched or crushed outer jacket). Extension cords which remain connected once they are put in place and are not exposed to damage need not be visually inspected until they are relocated.
- Extension cords used with grounding type equipment shall contain grounding conductor.
- If there is a defect or evidence of damage that might expose an employee to injury, the defective or damaged item shall be removed from service, and no employee may use it until repairs and tests necessary to render the equipment safe have been made.