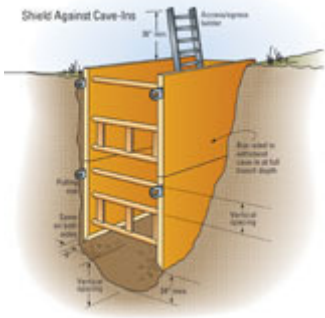




ARCO SAFE TOOL BOX TALKS

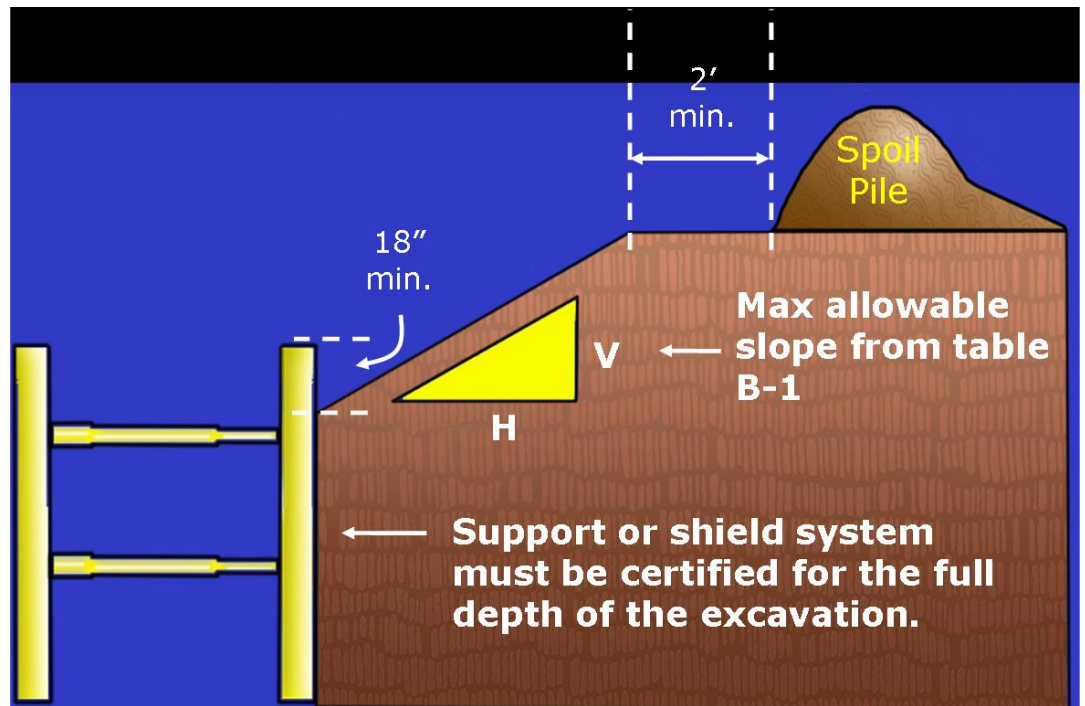
Excavation – Protective Systems (trench boxes)

1926 Subpart P, Excavations



Excavations are one of the most dangerous activities that occur on construction sites. That is why OSHA mandates the use of protective systems when workers on in trenches and the sides cannot be sloped or benched because of time or size restrictions.

- Excavations 4 feet or deeper require egress a maximum 25 feet from workers. 5 feet or deep **MUST** be protected with a support system.



- Support system must, minimum, be 18 inches above surrounding soils.
- Max slope is 1/1 leading away from walls of the support system. Spoils must be 2 feet from edge of slope.
- Support system must rest on the bottom horizontal “floor” of the trench.
- Support systems placed one on top of the other, must interlock so they do not shift.
- Trenches deeper than 20 feet must be certified by an engineer.
- Never move a support system with workers inside.
- Never suspend a load over workers in a trench.
- Workers can never be in a trench that has accumulated water in the bottom. Whether from rain or another source.