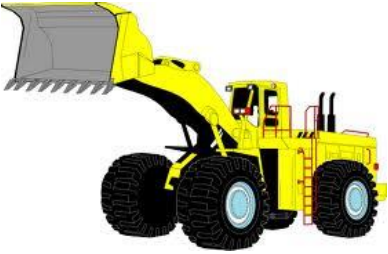




# ARCO SAFE TOOL BOX TALKS

## Heavy Equipment – Working Safely Around Heavy Equipment



### ***A Fatal Accident:***

The contractor was operating a backhoe when an employee attempted to walk between the swinging superstructure of the backhoe and a concrete wall. As the employee approached the backhoe from the operator's blind side, the superstructure hit the victim, crushing him against the wall.

This case study involves circumstances that we work in every day. This fatality could have easily been avoided by simply following a few rules.

### ***What can you do?***

These are important steps you can take to protect yourself around heavy equipment:

- Don't assume that the operator can see you
- If the equipment is backing up get out of the way
  - All equipment on ARCO jobsites are required to have a backup alarm
- Never step inside of the swing radius of Cranes and Backhoes
- **NEVER** walk under a load that is being moved by a Crane or Forklift
- Don't ride on any construction equipment unless it is designed for passengers
- Ensure equipment is completely powered down before performing maintenance

*Ask your foreman or superintendent if you ever have any questions about working around heavy machinery.*